

**NOW
LEASING**

Market SQUARE

CALVERT COUNTY
PRINCE FREDERICK, MD
Corner of Stoakley Road and Maryland Route 2/4



South Elevation - Building #100



West Elevation - Building #100



East Elevation - Building #100



Good Neighbors Building Great Neighborhoods.

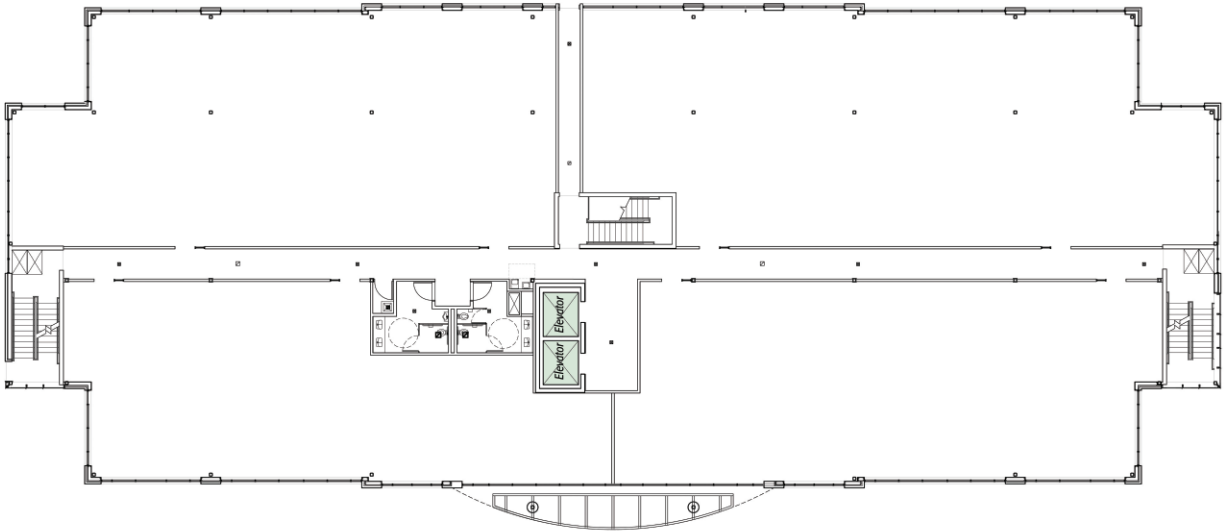
*For your Family. For our family.
For 20 years and counting.*



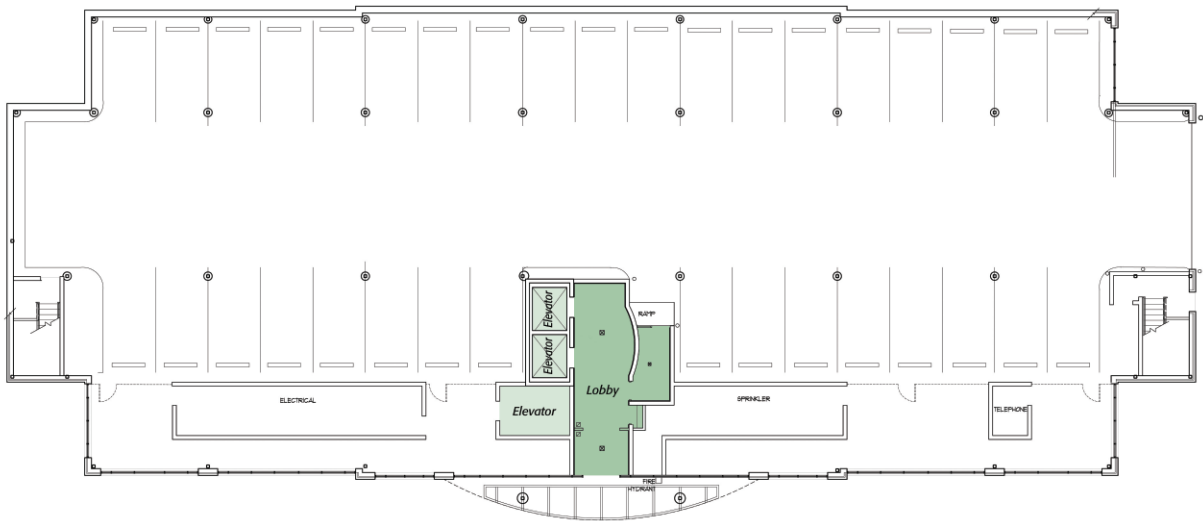
Marrick is committed to the people of Southern Maryland. We not only build the homes you live in, we build the offices you work in and the retail centers you shop in. Because, the way we see it, the good life doesn't just create itself. You have to go out and make it happen. So home by home, community by community, Marrick Properties is building Southern Maryland. For your family. For our family. And for generations to come.

Market SQUARE

PRINCE FREDERICK, MD



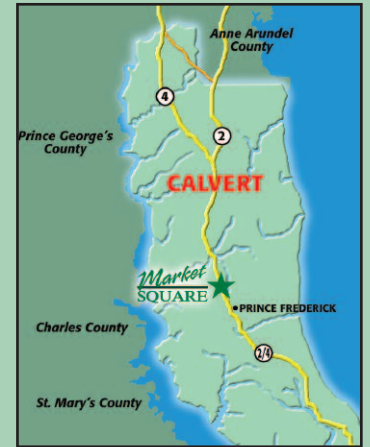
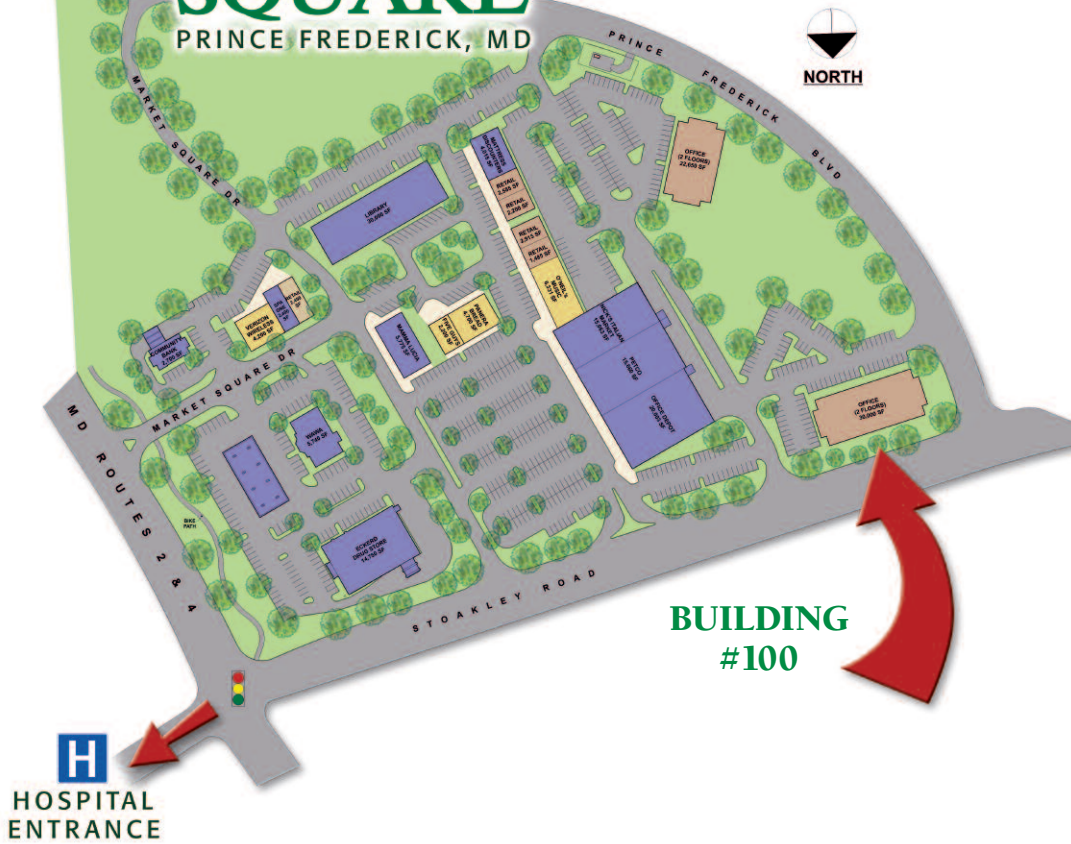
First Floor - Building #100



Lobby Level - Building #100

Market SQUARE

PRINCE FREDERICK, MD



BUILDING #100

LOCATION:

SW corner of Stoakley Road and Maryland Routes 2/4, Prince Frederick (Calvert County), MD

MARKET OVERVIEW

- Located directly across from Calvert Memorial Hospital
- Prince Frederick is the county seat of Calvert County
- Calvert County is the fastest growing county (%) in Maryland
- 2003 Traffic Count: 45,000+ AADT — MD Routes 2/4

FEATURES

Center: 165,000 sf Retail Center within Mixed-Use Development (32 Acres)

Retail Anchors: Office Depot, Petco, Nick's Italian Market

Retail: Wawa, Eckerd, Community Bank, Verizon

Restaurants: Mamma Lucia's, Five Guys Burgers, Panera Bread

OFFICE BUILDING AMENITIES

- Covered parking available
- Two elevators
- Individually controlled HVAC systems
- 9' finished ceilings
- Continuous glass windows
- 24 hour security
- Adjacent to loop road (Prince Frederick Blvd.)



MARRICK PROPERTIES

FOR LEASING INFORMATION CONTACT:

Corporate Office:

Marrick Properties
Suite 401

3150 West Ward Road

Dunkirk, MD 20754

301-855-3828

George Stewart

gstewart@marrickinc.com