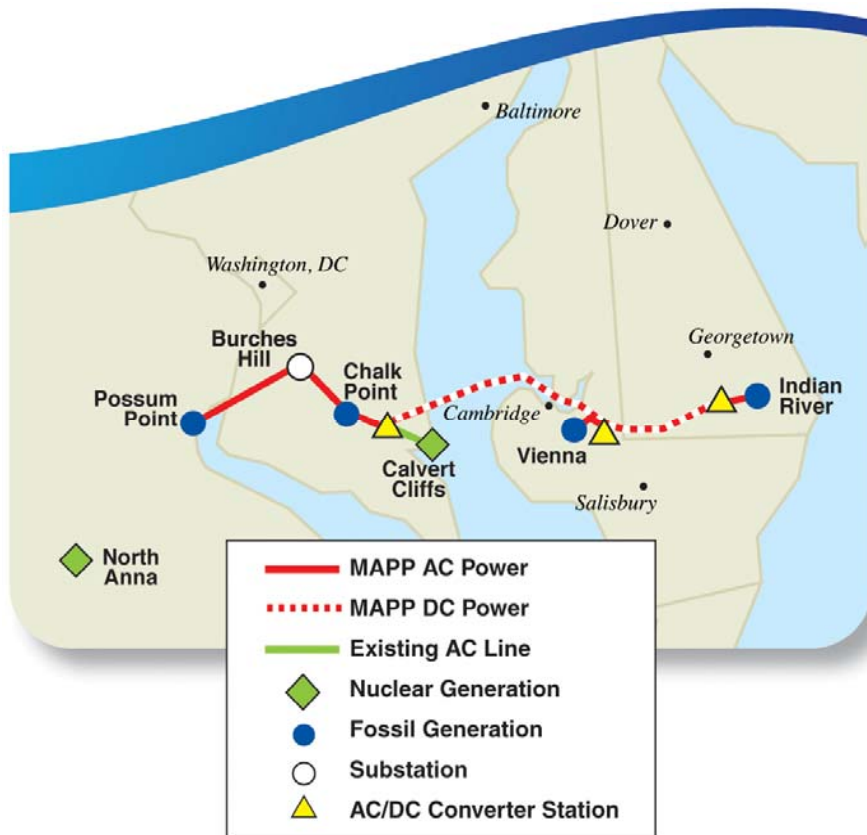




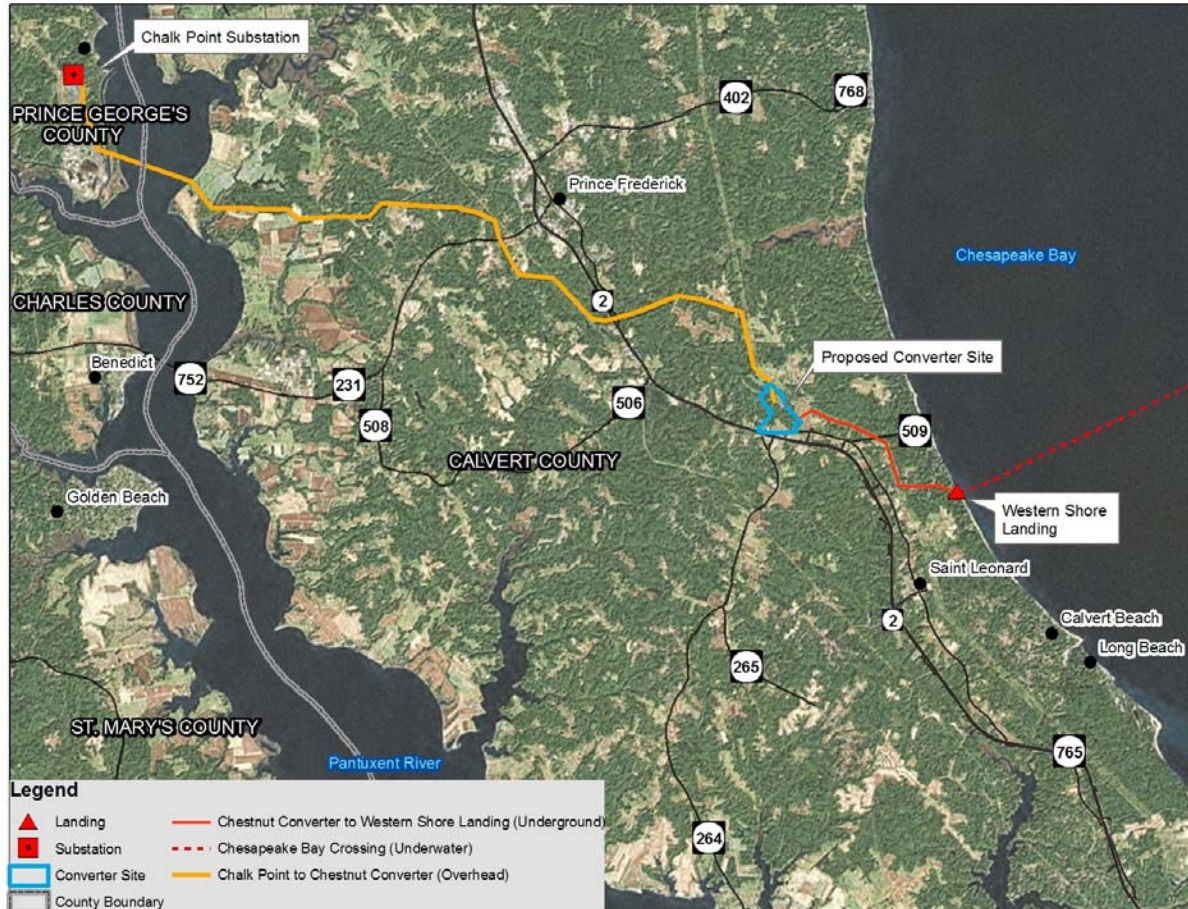
Western Shores Community
Meeting
March 24, 2011

- Agenda
 - Location
 - Design
 - Construction/Installation
 - Safety Measures
 - Schedule
 - Community Components
 - Question & Answer



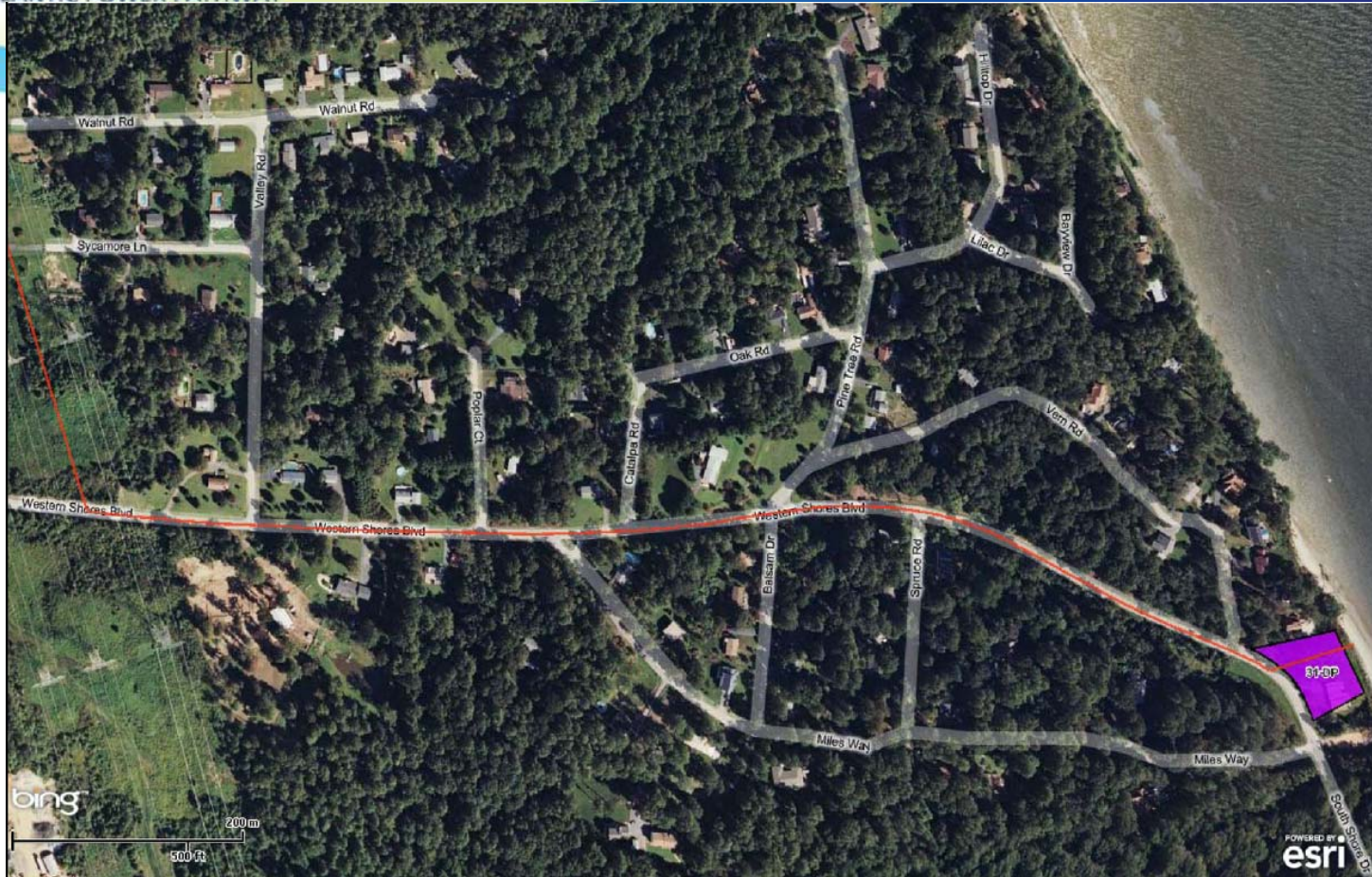
- **Target Completion Date: 2015**
- **Approximate Cost: \$1.2 billion**
- **Total length: 152 miles***
 - Approximately 63 miles* of 500kV AC lines
 - Approximately 83 miles* of +/- 320kV DC lines
 - Approximately 6 miles* of 230kV AC lines
- **DC Portion of the line:**
 - 3 miles* in Calvert County, MD
 - 39 miles* underwater (across the Chesapeake Bay and Choptank River)
 - 13 miles* in Dorchester County, MD
 - 7 miles* in Wicomico County, MD
 - 21 miles* in Sussex County, DE
- **AC Portion of the line:**
 - 470 feet in Prince William County, VA (500kv)
 - 30 miles in Charles County, MD (500kV)
 - 24 miles in Prince George's County, MD (500kV)
 - 9 miles* in Calvert County, MD (500kV)
 - 6 miles* in Sussex County, DE (230kV)

* Final distance dependent on agency approved and permitted route

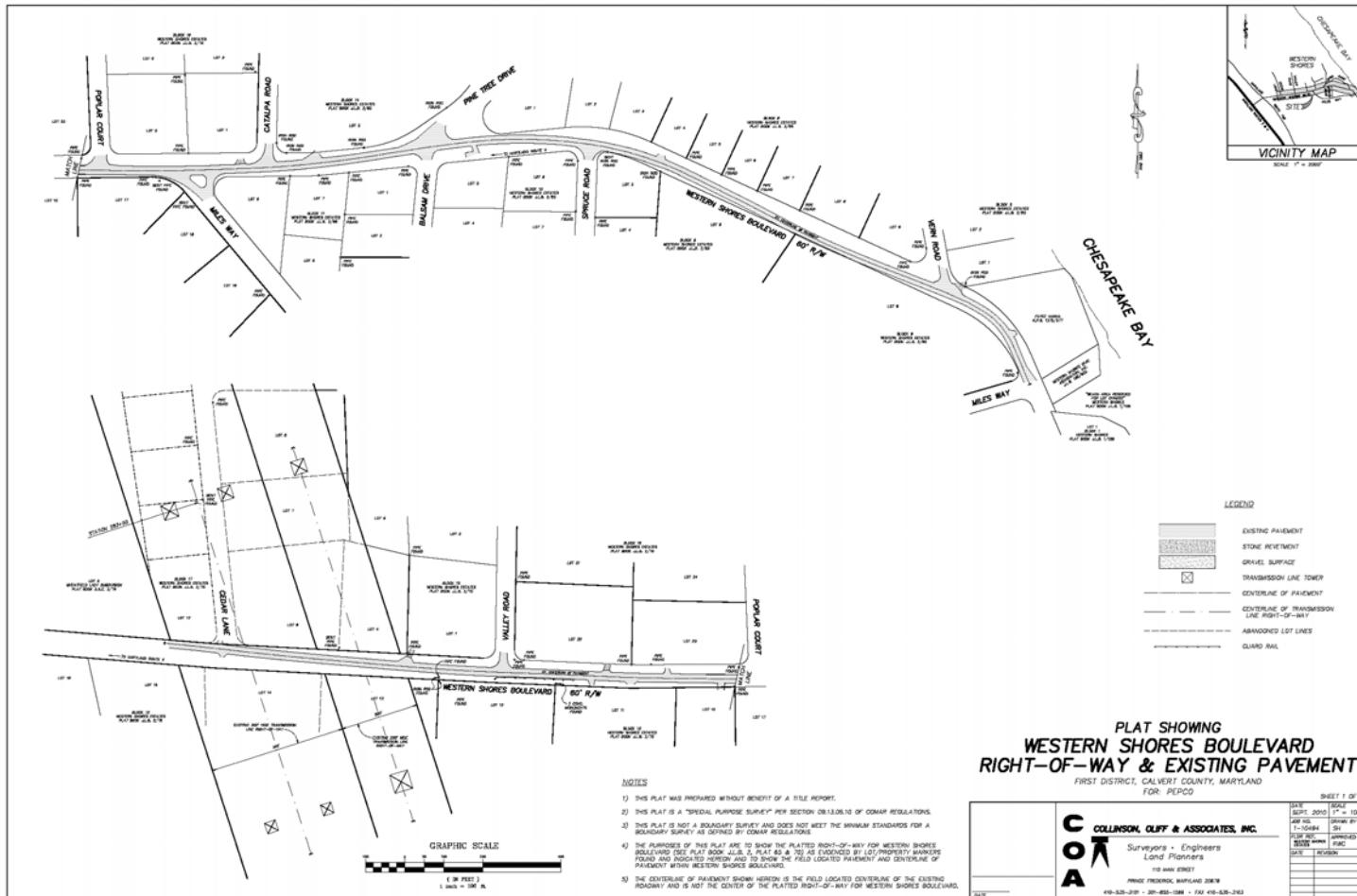


Route Selection Considerations

- Distance to Bay from converter
- No cliffs at landing point
- Willing property owner
- Existing road or cleared r/w
- Least environmental impact



- Underground cables will be installed from the converter stations, down the BGE R/W to Western Shores Blvd.
- The cables will then be installed in duct bank in the Western Shores Blvd. R/W from the BGE R/W to 2450 Western Shores Blvd.
- There will be two separate duct banks, probably one under each lane



- Western Shores Blvd. R/W is wider than the road, so there could be some disturbance outside the road edge
- Two manholes (one for each circuit) will be located at the BGE R/W and two somewhere midway to the lot at 2450 western Shores Blvd.
- There will be two to four manholes on the property at 2450 Western Shores Blvd.

Proposed Cable In Duct Bank (Western Shores Blvd.)

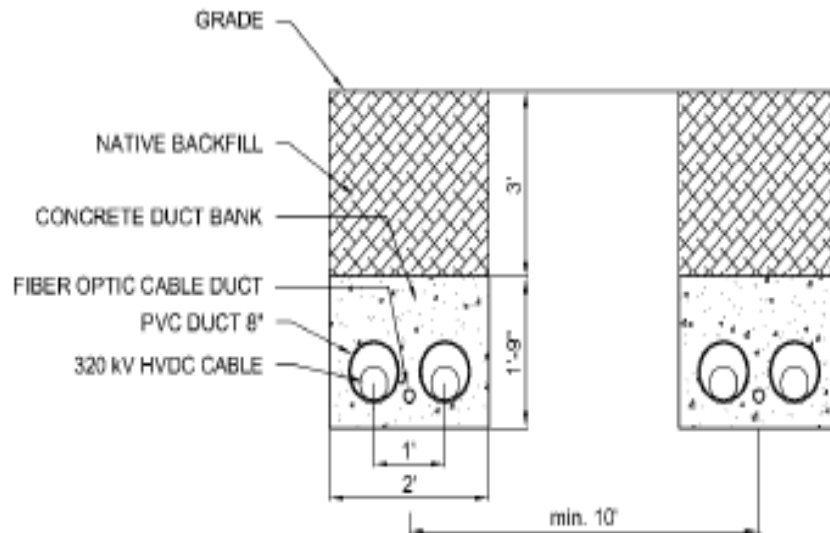
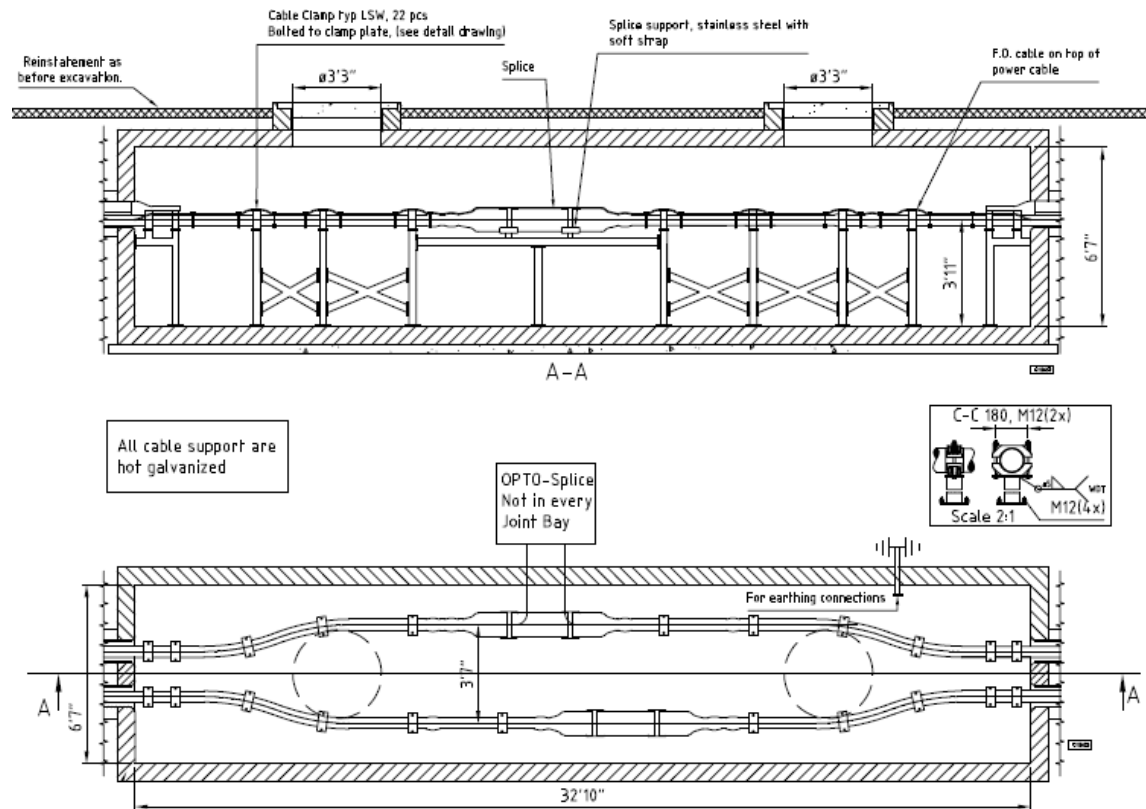


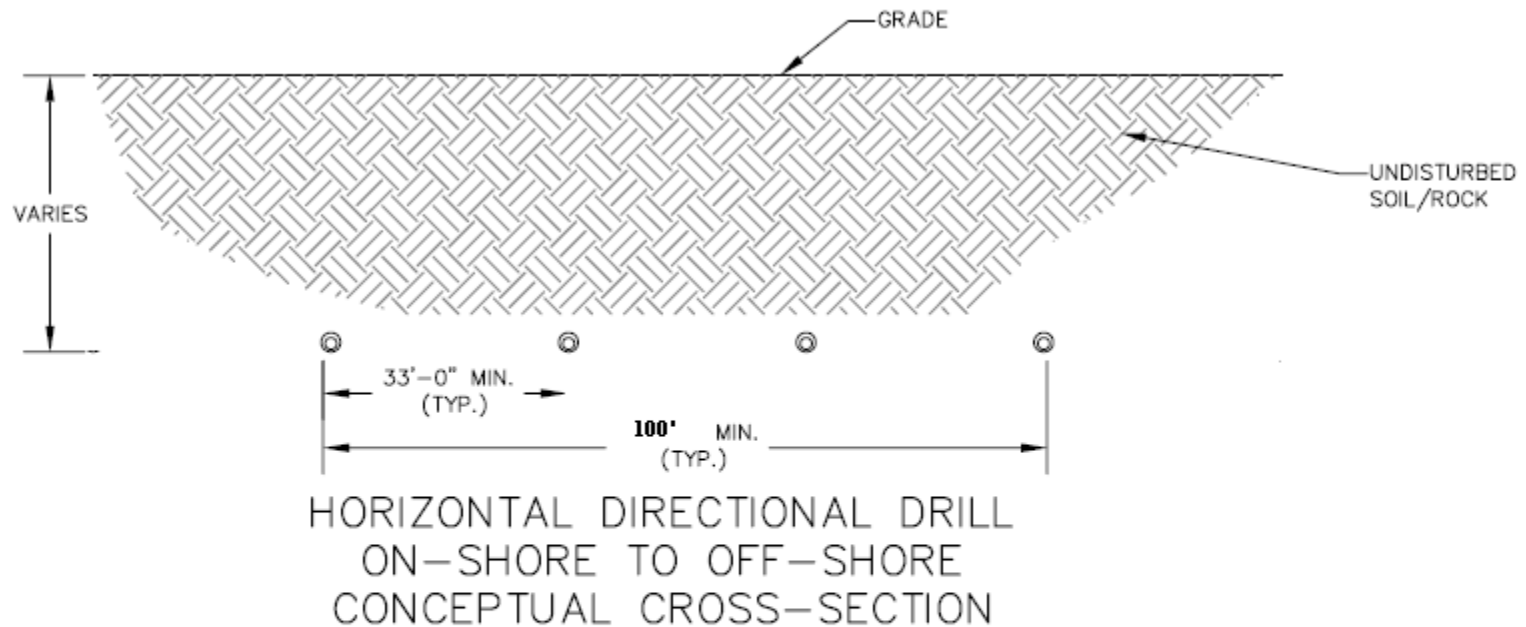
Figure 2: Configuration of underground cables installed in duct bank

- Two separate duct banks, each will contain 3 conduits for the cables and the trench will be 4-5 feet deep and approximately 2 feet wide
- There will be two DC power cables and a fiber optic cable in each duct bank

Typical Manhole



Each manhole is approximately 34' long x 15' wide x 8' high, the manholes are used to pull in the cables and to splice the cables together



- A process known as horizontal directional drilling (HDD) will be utilized to install conduits from the lot at 2450 Western Shores Blvd. out into the Bay approximately 1500 to 2000 feet
- The shoreline will not be disturbed
- The cables are then pulled from the Bay, through the conduits and spliced to the land cables on the landing lot



- Install Sediment Controls
- Saw road surface – one travel lane open at all times

Example of Duct Bank Being Installed



- Excavate trench and place sand/gravel backfill
- Install conduit, pour concrete, backfill & compact trench
- No tree removal is anticipated

Example of Duct Bank Being Installed

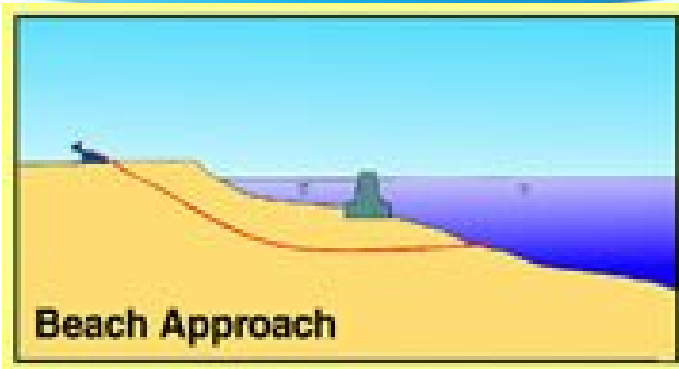




- Install Manholes
- Install temporary asphalt paving
- Install permanent asphalt paving upon project completion



- Manhole Lid will be flush with ground
- Cable pulling will require a lane closure in the vicinity of the manhole
- After the cable is installed, it is spliced together within the manholes
- Splicing operation at each manhole could take 2 weeks
- Once complete, cable will cause no interference to phone, cable or internet service
- Expect to see support and safety equipment such as tripods and ventilation equipment
- Complete final grading and seeding
- Construction Equipment – trucks, flat bed trucks, dump trucks, concrete trucks excavation equipment, paving equipment, cable transporting and pulling equipment, small truck cranes, jersey barriers, steel plates



- Four separate conduits will be installed into the Bay
- Conduits are installed to prevent disturbance of the shoreline and adjacent shallow waters
- Submarine cable is pulled from the Bay, through the conduits and into the manholes



Pepco focuses on public & personnel safety at the job site

- Traffic Control
 - Maintain one 10 foot wide minimum travel lane at all times
 - Install concrete barriers to separate traffic from construction
 - Utilize portable traffic signals



Additional safety measures

- Dust control – add water to the asphalt cutting process to minimize dust, limit construction traffic speed and employ street sweeping equipment as needed
- Noise & vibration control
 - Schedule work to ensure it is completed during suitable work hours
 - Monitor noise levels and take appropriate action to control
 - Ensure equipment has appropriate noise emission controls
 - Reduce speed limit to limit vibration from trucks
 - Select construction methods not involving impact when possible

- Overall Construction will be three to five months
- Average installation rate for duct bank of 150 feet per day
- At any given time, approximately 1,000 feet of one lane will be closed
- Open trench will be plated over each night for safety, not for driving
- Should be no construction work until 2013 in Western Shores

- What will Pepco be doing prior to construction?
 - Demolishing the house at 2450 Western Shores Blvd.
 - Performing soil boring, surveying and other pre-construction activities
 - Perform traffic studies to help community/Pepco determine construction times
- What will Pepco do during construction?
 - Work with local utilities (electric, phone, cable, water) to ensure uninterrupted service
 - Replace existing water main where necessary
 - Replace storm water facilities where Pepco disturbs them
- Other Community Involvement
 - Make the landing point property permanently available to the community for public use, except during construction periods
 - Hire a site engineering firm to work with Pepco and the community to develop plans for community facilities on the take-off property including pavilions, picnic area, boat ramp, etc.
 - Continue to cooperate with Calvert County on design and construction

For further information, please visit our website:

www.powerpathway.com

Phone: 1-888-641-6277

E-mail: mapp@pepcoholdings.com